



# NEWSLETTER

SEPTEMBER 2004

Editor : Bob Young

## SCALE DAY! SUNDAY, SEPTEMBER 12TH

**Arrangements are well under way for our annual Scale Day. Members and any friends and relatives are welcome to get together at the field to see the models we are proud of and enjoy a spot of food and drink as they do so. There is a competition which is designed to be a friendly affair in order to be a pleasant day out, as it has so often been in the past. Your "Contest Director" this year is Peter Emanuel. The key arrangements are generally as previous years but listed below as a reminder.**

**Entrance gate.** A mobile phone number will be displayed at the gate and it can be used to summon a member to open it. Which means, of course, that people who have no key should arrive with a key-carrying member, or bring a mobile phone with which to summon assistance.

### **Field arrangement and flying rules.**

Flying boundaries will be devised and marked out with tape on the day, with special regard for the safety of visitors. This may include departing from the customary arrangement of the pits if the wind requires it. There will be a large diagram on display for pilots to brief themselves. Even if you don't have something to offer for the "scale" competition, don't be shy about bringing your favourite model to put into the air for part of the day.



A recap of last year's result

**General flying will be in operation from at 11.00 a.m. to 1.00 p.m.**

**Competition classes.** If you are taking part in the competition, register your model on arrival. The class of each entry will be decided at the time of registration. Entrants will be given a label to attach to their models displaying their contest number, their name, the model's name and its class. There will be five classes:- Large Civil Scale, Small Civil Scale, Large Scale Military, Small Scale Military and Electric Scale. There is also a trophy for "Best Flight of the Day." **"Large Scale" is defined as a model which is quarter scale or of 82 inches wing span or more. If you did not build your entry model yourself, you will be required to fly it yourself. Self-built models, including ARTF's if the owner has assembled them, may be flown by somebody else.**

**General flying will end at 1.00 p.m.** to allow entrants practice flights for one hour. At 2.00 p.m. entrants will begin their qualifying flights, with **ONLY ONE IN THE AIR AT A TIME**. Serious attempts will be made to co-ordinate start-ups, take-offs and landings to provide a watchable show, so please co-operate with Peter.

**Voting slips will** ask for the voter's first, second and third choices in each class. They will be collected and counted at 4.30 p.m. Trophy presentation is at 5.00 p.m.

**In case the weather looks iffy.** From the evening of Saturday, September 11th, a recorded message on telephone number **01494 672004** will announce the committee's decision to go ahead or cancel. An email message will also be sent if it is decided to postpone the event.



The pictures shown above were captured by Leon Taylor when he visited Old Walden recently. Hopefully they will encourage members to get their model versions out of their hangers and join us on our scale day.

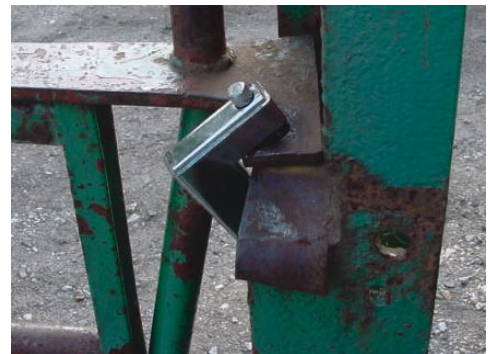


These pictures show the situation at a small regional airport in Florida after Hurricane Charley had departed. It's no wonder that aeromodellers have trouble with the wind from time to time.



## ANOTHER ATTACK ON THE LOCK

A few weeks ago Des Wheatley arrived at the field and discovered that the padlock had disappeared. After a search of the area he found a small length of the padlock pin with no sign of the rest of the padlock. This appeared to have been sheared off from the remainder of the pin. An examination of the gate revealed some damage to the holes through which the padlock is attached indicating that a significant force had been used. If you see any suspicious activity at the gate, note the vehicle number of any vehicles around, and please contact a committee member so that they are kept aware of any developments.



## WYCOMBE MODEL FLYING SHOW

HWDMAC will be holding their bi-annual Model Flying Show and Family Fun Day at Hard to Find Farm, Daws Hill Lane, Flackwell Heath on Sunday 5<sup>th</sup> September. Displays by flying radio controlled model aircraft will include vintage aircraft, sport and aerobatics, plus gliders and helicopters. There will also be a spectacular pyrotechnic attack sequence where all types of aircraft will attack and destroy a 'defended' ground installation. The attack sequence will have a very topical theme and, once the aircraft attack has started, there will be explosions, smoke and lots of noise! See [www.modelflyingshow.co.uk](http://www.modelflyingshow.co.uk) for more details.

**NEXT MEETING** - For our first meeting back at the **Battle of Britain Club on Thursday 9th September** we had planned to have MacGregor demonstrate their latest products. However they recently advised us that they could not fulfill this commitment and instead we will have an **"Aviation Book" Bring and Buy Sale**. So here is your opportunity to tidy up your bookshelves or find that very specialised publication that you have been seeking.

The Meeting will commence at 8.00pm and we hope to see you all there.